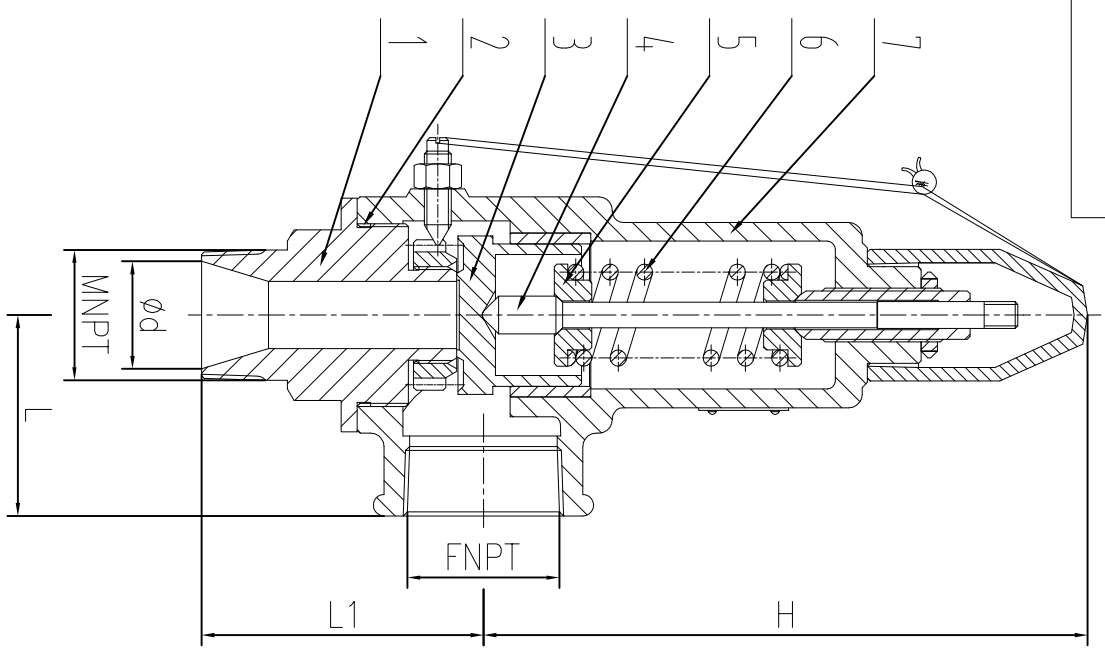


1. Testing and inspection as to: API 527
2. Face-To-Face demension as to: MFR STD
3. Pressure-temperature conforms as to: ASME B16.34
4. Design & Manufacture as to: API RP520
5. NPT Threaded end standard as to: ASME B1.20.1
6. Design Certificate: BS EN 10204 Type 3.1
7. The material shall comply with NACE MR-0175 (2002) requirement




NPS	ød	MNPT	FNPT	L	L1	H
1/2" X 3/4"	15	1/2"	1/2"	45	65	118
3/4" X 1"	20	3/4"	3/4"	40	75	123
1" X 1"	25	1"	1"	40	75	123
1 1/2" X 2"	40	1 1/2"	2"	67	105	235
2" X 2"	50	2"	2"	67	105	235

Performance Standard		
Nominal Bore	NPS	1/2" X 3/4" ~ 2" X 2"
Nominal Pressure	Class	PN16
Pressure Test		
Shell Test	2.4	Mpa
Seat Test	1.76	
Backseat Test	/	
Air Test	0.6	
Set Pressure	10 Bar	
Spring Preload Range	7~10 Bar	
Working Temperature	-29℃ ~ +425℃	
Suitable Medium	Corrosive media	

1.	Nondestructive Test		
1.1	Pressure Test	API 527	Yes
1.2	Chemical composition certification	Mandatory	Yes
1.3	Penetrant Test	All Body Surface	Yes
1.4	Magnetic particle testing	All Body Surface	Yes

No.	Part Name	Material
1	Seat Nozzle	A351 CF3M
2	Gasket	SS316L+Graphite
3	Disc	SS316L
4	Stem	A182 F316L
5	Guide	A182 F316L
6	Spring	SS316L
7	Body	A351 CF3M

DESIGN BY		Spring Load Full Open Safety Valve	
CHECKED BY			
STANDARD BY			
APPROVED BY		Technology	
THE USER CONFIRM		Date	
		DRAWING No.	SSTHGX-CF3M
		FNPT X MNPT PN16 Set Pressure : 10Bar	